

HORTICULTURES

SANDER & FILS

FIRME HORTICOLE

SUCESSEURS DE

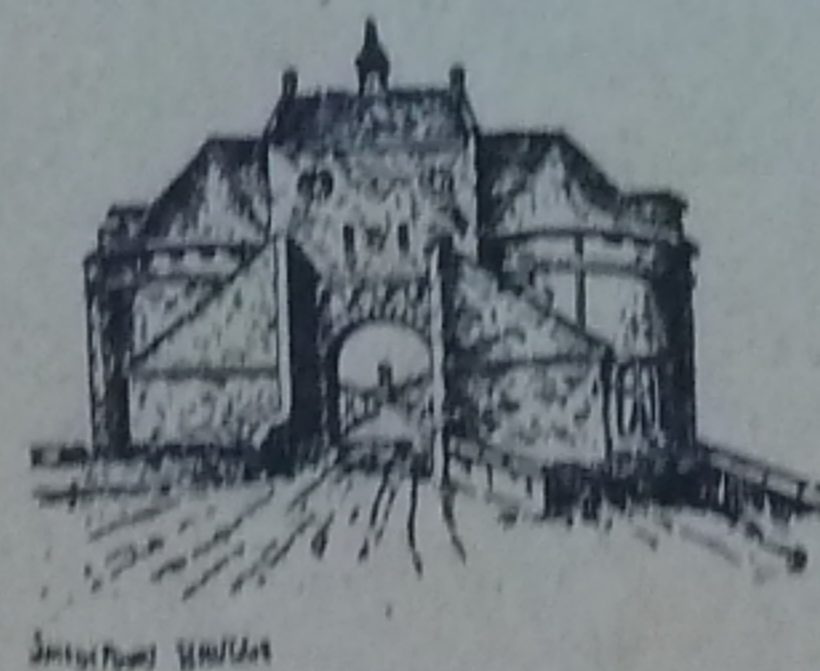
ETABLISSEMENTS HORTICOLES

SANDER & FILS

SOCIÉTÉ ANONYME

BRUGES

Fondés en 1894 par H. F. C. SANDER V. M. H.



St ANDRÉ-BRUGES
(BELGIQUE)

Télégrammes : Sander Bruges

Téléphone Bruges 337-75

Registre du Commerce

Bruges : 31154



ROGER F. SANDER
ORCHIDS & FLOWERING PLANTS

All communications to be addressed to
9, BATTLEFIELD ROAD
ST. ALBANS - HERTS
TELEPHONE 51486

Nursery : "Sanders" Russells Nurseries
Hempstead Road
WATFORD-HERTS
TELEPHONE 4740

SEASON 1958-1959

OSMUNDA

FIRST CLASS FIBRE
INDISPENSABLE FOR PERFECT
ORCHID GROWING
PER BALE OF 80 TO 90 lbs

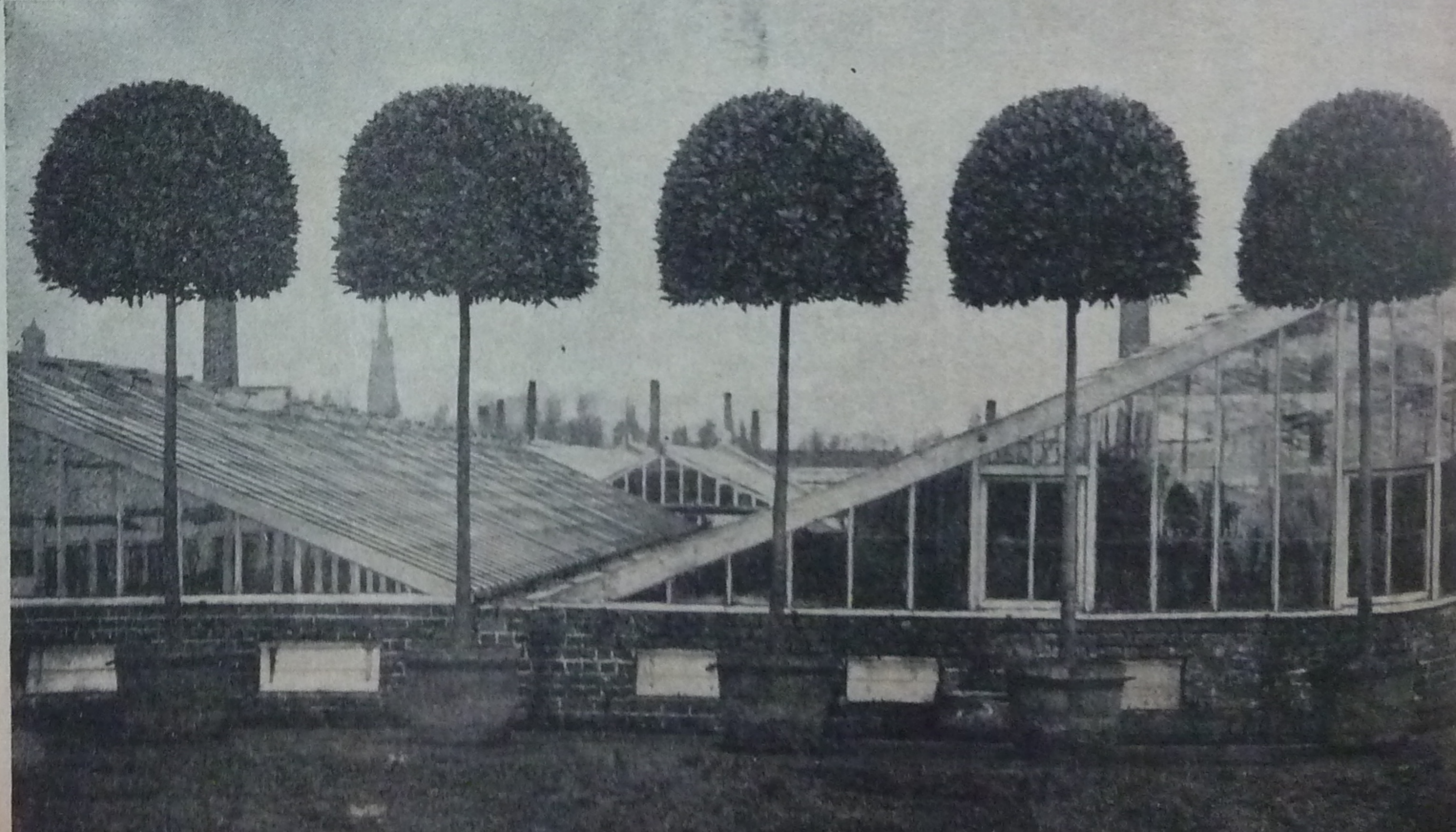
75/-

or

PER 20 BALES

(approx. 1 ton)

£ 70- (delivered)



BAY TREES

STANDARDS with 3'9" to 4' stems

Price
per pair

No.	1a. diameter	Price per pair
	1'6"	50/-
1.	1'9"	60/-
2.	2'	70/-
3.	2'3"	80/-
4.	2'6"	90/-
5.	2'9"	100/-
6.	3'	125/-
7.	3'4"	150/-
8.	3'8"	175/-
9.	4'	200/-



BUSHES

Price
per pair

No.	Total height	diameter	Price per pair
18.	2'4"	1'9"	50/-
19.	2'8"	2'	60/-
20.	3'	2'3"	70/-
21.	3'3"	2'6"	85/-
22.	3'3"	2'9"	100/-

PYRAMIDS

No.	Total height	Price per pair
23.	3'	40/-
24.	3'6"	45/-
25.	4'	50/-
26.	4'6"	60/-
27.	5'	75/-
28.	5'6"	85/-
29.	6'	95/-
30.	6'6"	110/-
31.	7'	130/-
32.	7'6"	165/-
33.	8'	210/-
34.	8'6"	250/-

SHORTSTEM STANDARDS

with 2' to 2'6" stems :

Price
per pair

No.	diameter	Price per pair
12.	1'6"	50/-
13.	2'	70/-
14.	2'3"	80/-
15.	2'6"	90/-

Larger sizes quoted on demand.

COLUMNS

Price
per pair

No.	Total Height	Price per pair
39.	4'	85/-
40.	5'	110/-
41.	6'	150/-
42.	6'6"	190/-
43.	7'	250/-
44.	7'6"	300/-

PALMS

	Price per plant	
	(Single)	(Touffes)
Overall height 1' to 1'6"	2/6	—
1'6" to 1'9"	3/6	8/-
2'	5/6	10/-
2'6"	7/6	12/6
3'	10/-	20/-
3'6"	15/-	30/-
4'	20/-	45/-
5'	30/-	tubs 90/-
6' in tubs	50/-	" 110/-
7' " "	70/-	" 190/-
8' " "	90/-	" 195/-
9' " "	120/-	" 240/-

KENTIA BELMOREANA

Nice plants 1'3"	3/-	—
1'6"	4/6	7/6
2'	6/-	10/-

COCOS WEDDELIANA

	Price per plant	
	(Single)	(Touffes)
Overall height 8" to 10"	1/6	—
10" to 12"	2/-	4/-
12" to 14"	2/6	5/6
14" to 16"	3/-	7/6

N.B. Larger sizes, prices on request.

PHOENIX CANARIENSIS

Total height 2'	10/-
" " 2'6"	15/-
" " 3'	20/-
" " 3'6" to 4' in tubs	35/-
" " 4'6" to 5' " "	50/-

PHOENIX ROEBELINI

Total height 1'9" to 2'	20/-
" " 2' to 2'6" in tubs	35/-
" " 3' to 3'6" " "	70/-

HORTENSIAS

(Hydrangea Hortensis)

Selection of a few varieties, specially suited for forcing, and all of rich colouring.

Strong plants, well grown with 5 to 7 flowering shoots 3/6 each.

m. ADMIRATION	dark red.
m. BENELUX	light blue.
m. DEUTSCHLAND	rose.
m. " "	blue.
m. EUROPA	good pink colour.
m. EUROPA	light blue.
m. HAMBURG	fine blue.
m. " "	good pink.
e. HOLSTEIN	light blue, fine.
e. " "	rosy-pink.
m. KING GEORGE	good deep rose pink.
e. Mme. E. MOULLIERE	fine white variety.
m. PRIMA	one of the best, dark red.
m. RAYMOND DRAPS	light red, new variety.
m. Ste THERESA	new fine white.
m. YOLA	dark blue.

e. early flowering varieties. m. medium flowering varieties. l. late flowering varieties.

WE HAVE PLEASURE IN OFFERING A FEW

BROMELIADS

FROM OUR NEW COLLECTION

Two sizes : good growing offsets at each 10/6
stronger plants, some already showing colour " 15/-
in the following varieties :

Aechmea caelestis fol. var.	Nidularium Lubbersii
" fulgens	" Mackeyana
" " discolor	" Marechalii
" Weilbachii	" purpureum
" " rubra	" rutilans
Ananassa sativa, fol. var.	" Saundersii
Billbergia Rhodocyana	" spectabilis
" Leopoldii	" striata
Canistrum eburneum	" striata alba
Chevalliera cocophylla	Ortgiesia Legrelliana
Encholirium Saundersii	Rhodostachys Pittcairnifolia
Nidularium Acanthator plutonis	Tillandsia caespitosa
" " proserpine	" glazoviana
" Chlorostictum	" Lindenii
" concentrica	Vriesia guttata,
" Innocentii	" splendens
	" " Major.

VARIOUS PLANTS

ACACIA PARADOXA	Price per plant
Pyramids 2' high	6/-
" 2'6" "	7/6
" 3' "	9/6

ANTHURIUM ANDREANUM	
Well grown seedling plants, ready to flower	7/6 to 10/-
Strong plants 2'6" to 3' high	20/- to 25/-

ANTHURIUM SCHERZERIANUM	
Good plants in 60's	5/- to 7/6
Larger, fine plants	10/- to 15/-

ARALIA SIEBOLDII	
1' to 1'6" high	4/-
1'6" to 2' "	6/-

ARAUCARIA EXCELSA in six useful sizes :			
about 10" high	2 1/2	tiers	2/6
" 12" "	2 1/2	"	3/-
" 14" "	2 1/2 to 3	"	4/-
" 16" "	3	"	5/-
" 20" "	3	" 4 "	6/6
" 24" "	3	" 4 "	8/6

ASPARAGUS PLUMOSUS	
Attractive young plants	1/6
Stronger plants	2/6 to 3/6

ASPARAGUS MYRIOCLADUS	
Fine plants 2'6" to 3' high	15/- to 20/-

ASPIDISTRA ELATIOR		Price per plant
Green 8 to 10 leaves		4/-
" 10 to 12 "		5/6
Variegated 10 to 12 "		8/6

ASPLENIUM NIDUS AVIS 3 useful sizes		Price per plant
about 1' high		2/-
" 1'3" "		3/-
" 1'6" "		4/-

AUCUBA CROTONIAEFOLIA		Price per plant
1' to 1'3" high		2/-
1'3" to 1'6" "		2/6

BEGONIA REX	
in a good selection of distinct varieties, in 60's	2/- to 3/-

BILLBERGIA RHODOCYANA	
Flowering sized plants	10/- to 12/6

PHILODENDRON PERTUSUM		Price per plant
Fine plants :		
with 3 to 4 leaves, about 2' high		8/6
" 4 to 5 " " 2'3" "		10/6
" 5 to 6 " " 2'6" "		12/6
" 7 to 8 "		
good strong plants 3' "		20/-
" 8 to 10 leaves, good strong plants 3'6" "		25/-

RHODODENDRONS			
in all the best and most popular varieties :			
4/6 buds	12" diameter		4/6
8/10 "	18" "		6/6
12/18 "	22" "		8/6
15/20 "	26" "		10/6
20/30 "	30" "		12/6

SANSEVIERA LAURENTII	
very fine stock, available in various sizes, as follows :	
In pots 3 to 4 leaves, small pretty plants	6/6
" " 3 to 4 " longer & larger leaves	8/6
" " 4 to 5 "	10/6
" " 6 to 7 "	15/-
" " 7 to 8 "	20/-
In small tubs 10 to 12 "	35/-
" " " 15 to 18 "	50/-

VRIESIA SPLENDENS MAJOR	
Capable of throwing spikes	10/6

VARIOUS PLANTS

BORONIA ELATIOR Price
per plant
10" diameter 4/6

CLIVIA MINIATA
Fine flowering sized plants 7/6 to 10/-

CITRUS SINENSIS
Well fruited, in 2 sizes 10/- to 15/-
(a few larger, sizes on request)

DRACAENA BRUANTII
about 1'6" 3/-
" 2' 4/-
" 2'6" 5/-

**DRACAENA GRACILLIS and similar reddish
vars.**
about 1'6" 5/-
" 2' 7/6

DRACAENA PARREI
about 1'6" 4/-
" 2' 5/6
" 2'6" 7/6
" 3' 9/6
" 3'6" in tubs 20/-
" 4' " " 30/-

EURYA LATIFOLIA fol. var.
nice bushes 1'3" to 1'6" 3/6
1'6" to 1'9" 5/-

EVONYMUS AUREA
1' to 1'3" high 2/-

EVONYMUS ARGENTEA Price
per plant
1' to 1'3" high 2/-

FICUS AUSTRALIS
1'6" 3/6
2' 5/-

FICUS ELASTICA
A very fine broad leafed variety
1'6" 5/-
2' 7/6
2'6" 10/6
3' 15/-
3'6" 20/-

FICUS ELASTICA TOUFFES Price
per plant
2'6" 40/-
3'6" 55/-
4'6" 70/-

FICUS PANDURATA
single stems 2' to 3' high 10/- to 15/-
well ramified plants 2' to 3' " 15/- to 25/-

GERBERA JAMESONII (Cape Daisy)
In mixed colours - strong plants in 4" pots
. 2/6 to 3/6

METROSIDEROS SEMPERFLORENS
Bushes 14" diameter 7/-
" 16" " 8/-
" 18" " 10/-
on 1'6" stems 18" " 12/-

MONSTERA DELICIOSA
Splendid, well grown and strongly
ramified plants, with 4 to 6 leaves
about 2'6" 20/-
" 3' 40/-
" 4' 60/-

NEPHROLEPIS
mixed varieties, bushy plants 3/6 to 5/-
strong plants in small tubs 10/- to 15/-



SANSEVIERA LAURENTII

AZALEA INDICA

Well shaped and freely budded plants :

		Price per plant
di. approx.	6 inches	2/3
"	8 "	3/-
"	10 "	4/-
"	12 "	5/-
"	14 "	6/6
"	16 "	7/6
"	18 "	12/6
"	20 "	17/6

in the following varieties :

ALBERT ELISABETH	double, white background, red border.
APOLLO	single, scarlet-red.
AVENIR	double red.
BENVENUTO CELLINI	fine brick red colour, compact, well shaped.
BLUSHING BRIDE	double pale rose.
DE SCHRYVERIANA	double rose, with pure white border.
ECLAIREUR	semi-double, good red colour.
* ERI	double, pink, cream white flake.
ERNEST EECKHAUTE	double, brilliant red.
* FINDEISEN	double, light salmon pink.
* FRED SANDER	double, dark rose.
John T. D. LLEWELYN	double salmon pink.
JULIUS ROEHRS	double red.
HOLLANDIA	double, fine brick red.
HAERENSIANA	double rose, with carmine blotch.
JEAN PEETERS	double carmine rose.
* Mme. PETRICK	double, pink, very early.
Mme. VAN DER CRUYSSSEN	semi-double, bright rose.
* Mme. AUG. VAN DAMME	rose, white border.
Mme. JOHN HAERENS	bright rose.
* Mme. GAU	double pink, white border.
* MEMORIA SANDER	double, deep red colour, very fine.

earley varieties

* MAX SCHAME

double salmon pink, white flaked and edged.

NIOBE

double ivory white.

* PAUL SCHAME

double salmon pink.

* PAX

double very fine white variety.

* PERLE DE NOISY

double pale pink.

PINK PEARL

double flesh colour, very attractive.

* PRINCESS BEATRICE

double dark salmon pink.

RUBIS

double deep red late.

* SIMON MARDNER

double bright pink.

VERVAENEANA

double deep rose, white flaked and edged.

VERVAENEANA ALBA

pure double white.

VERVAENEANA ROSEA

very fine double salmon rose.

VIOLACEA MULTIFLORA

double, dark mauve, very floriferous.

N.B. A few Azalea pyramids and stems are now available, prices on request.

AZALEA BUSHES

	Price per plant
diam. approx. 6 inches	2/3
" " 8 "	2/9
" " 10 "	3/6

in good varieties as :

ECLAIREUR

Mme. JOHN HAERENS

ERI

Mme. PETRICK.

HEXE

PAUL SCHAME and others.

We can also offer :

AMOENA

KIRIN, rose

HAERENS LORRAINE

KIRIN, salmon

HINOMAYO

ROSAEFLORA

HINODIGIERI

and others.

in 3 useful sizes :

diam. approx. 8 inches	3/-
" " 10 "	3/9
" " 12 "	4/9

CAMELLIAS

We regret we have a very limited stock of plants to offer at the moment, therefore only orders which have definitely been confirmed by us can be taken into consideration.

In good varieties, well budded,

	each
approx. total height 1'6"	7/6
" " " 2"	10/6
" " " 2'6"	15/-
" " " 3'	20/-
Small plants, with only a few buds, 10" to 12" high	5/-
" " " " " " " 12" to 14" "	7/6

selected from the following varieties :

ADOLPHE AUDUSSON	large bold flower deep red.
BELLA LAMBERTI	red.
CAMPBELLI	semi-double, good forcer light red.
CHANDLERI ELEGANS	Pink, with white spot, early good forcer.
COMTE BOUTOURLIN	imbr. fine red.
COMTESSE LAVINIA MAGGI	Big white, lined red flower.
DONKELAARI	semi double, red flecked white
DONKELAARI EUG. LIZÉ	semi double, dark pink.
FRANS VAN DAMME	imbr. dark rose striated with white.
GENARAL LAMORICIERE	imbr. rose.
GLOIRE DE NANTES	semi double, large bold pink prominent stamens.
SOUV. DE BAHUAUD LITOU	double large soft rose.
IMBRICATA RUBRA	carmin, early good forcer.
LA PACE	white background striped with carmin
LATIFOLIA	very large flower, brilliant red.
LE LYS	semi-double, large white.
MADAME CACHET	white with light red.
Mme. LEBOIS	double dark red.
MARGUERITE GOUILLON	fine pink, speckled red, early good forcer.
MARGUERITE CALEONIE	imbr. red crimson flower.
MATHOTIANA ALBA	very big flower, pure white.

MATHOTIANA ROSEA	imbr. very big flower, brilliant rose.
MONSIEUR FAUCILLON	imbricate rose cerise.
NOBILISSIMA	Poen. pure white-early.
PEACH BLOSSOM	salmon pink, very pretty.
PRESTON ROSE	pink, tight petalled, early good forcer.
PRINCESSE BACCIOCHI	double carmine.
RUBESCENS MAJOR	carmin pink, excellent variety.
SALUENSIS	single rose pink.
VILLE DE NANTES	fine large red, with fringed petals, extra.

N.B. Specimens in tubs, prices on request.

CAMELLIA RETICULATA, fine stock, well budded,

	each
12" to 15" high with 3 to 4 branches	10/-
18" to 20" " " 4 to 5 "	12/6

Some really special and very extra varieties, of which we have been working up a stock since the war namely :

ABONDANCE	double, rose colour, large bold flower, buds freely.
ANEMONAE FLORA	semi-double, white.
BLACKBURNIANA	semi double dark red.
EXCELSA	single, carmine-rose colour.
FRED SANDER	semi double, glowing fiery red petals, deeply fringed, prominent stamens.
JOY SANDER	single delicate rose pink, beautiful flower.
KIMBERLEY	single red, very round flower.
LADY CLARE	soft light rose flush color, large shapely bloom.
LADY MACKINNON	single, dark red, sometimes flecked white.
LA ROYA	large semi double bright red.
MAGALI	single, rose colour, perfect shape.
MAGNOLIAEFLORA	semi double, soft blush pink, buds freely.
SALLY	striped, semi double, a charming flower.
WARLEYENSIS	big semi-double light red bloom, petals lightly veined.
WHITE SWAN	semi double, pure glistening white.
J.C. WILLIAMS	single, deep rose pink.

VERY NICE BUSHY PLANTS, from 1'6" to 1'9" high

at the special price of 15/- each.

TUBEROUS BEGONIAS



SINGLE, ERECT-FLOWERING BEGONIAS

In six separate colours : pure white, rich crimson, clear rose, golden yellow, copper orange, brilliant scarlet.

	per 100	per 1000
Bulbs from 1" upwards	20/-	180/-
" " 2" "	32/6	285/-
Single crispa beautifully frilled blooms in separate colours	44/-	400/-
Single cristata particularly fine crested blooms in separate colours	50/-	450/-

DOUBLE, ERECT-FLOWERING BEGONIAS

In separate colours, pure white, copper orange, golden yellow, rose clear, rich crimson, brilliant scarlet.

Bulbs from 1" upwards	20/-	180/-
" " 2" "	32/6	285/-
Double fimbriata beautifully fringed blooms in separate colours	50/-	450/-

We have pleasure in offering BULBS of our own choice

DOUBLE VARIETIES, specially selected while in flower

amongst hundreds of thousands of plants	each	2/-
	per dozen	20/-

BEGONIA MULTIFLORA (small flowered)

	per 100
AMI JEAN BARD orange yellow	60/-
ALICE CROUSSE salmon rose	60/-
BIJOU DE GAND double dark copper colour	60/-
FLAMBOYANT cherry red, very floriferous	50/-
Mme. HELENE HARMS delicate yellow	60/-
RICHARD GALLE double copper colour	50/-

BEGONIA PENDULA (for hanging baskets)

Assorted in colour : white, yellow, pink, red and orange	55/-
Fine mixed	45/-

GLOXINIAS

In the following varieties :

ARIZONA
FIREBALL
KING GEORGE
PRINCE OF WALES
PRINCESSE ELIZABETH
PURPLE KING

white, pink border.
light red.
red with white border.
deep purple.
white with blue border.
rich violet.

QUEEN VICTORIA
SCARLET KING
SNOWDEN
VIOLACEA
VICTORY
WATERLOO

a fine freckled form
in different shades.
scarlet.
beautiful pure white.
deep mauve purple.
blue with white border.
dark red.



per 100
per 1000

50/-
450/-

ORCHIDS

CATTLEYA HYBRIDS :

A. SEEDLINGS- 3 to 4 bulbs, in 2 1/2" pots, 25 distinct hybrids, varied colouring, and flowering throughout the year,

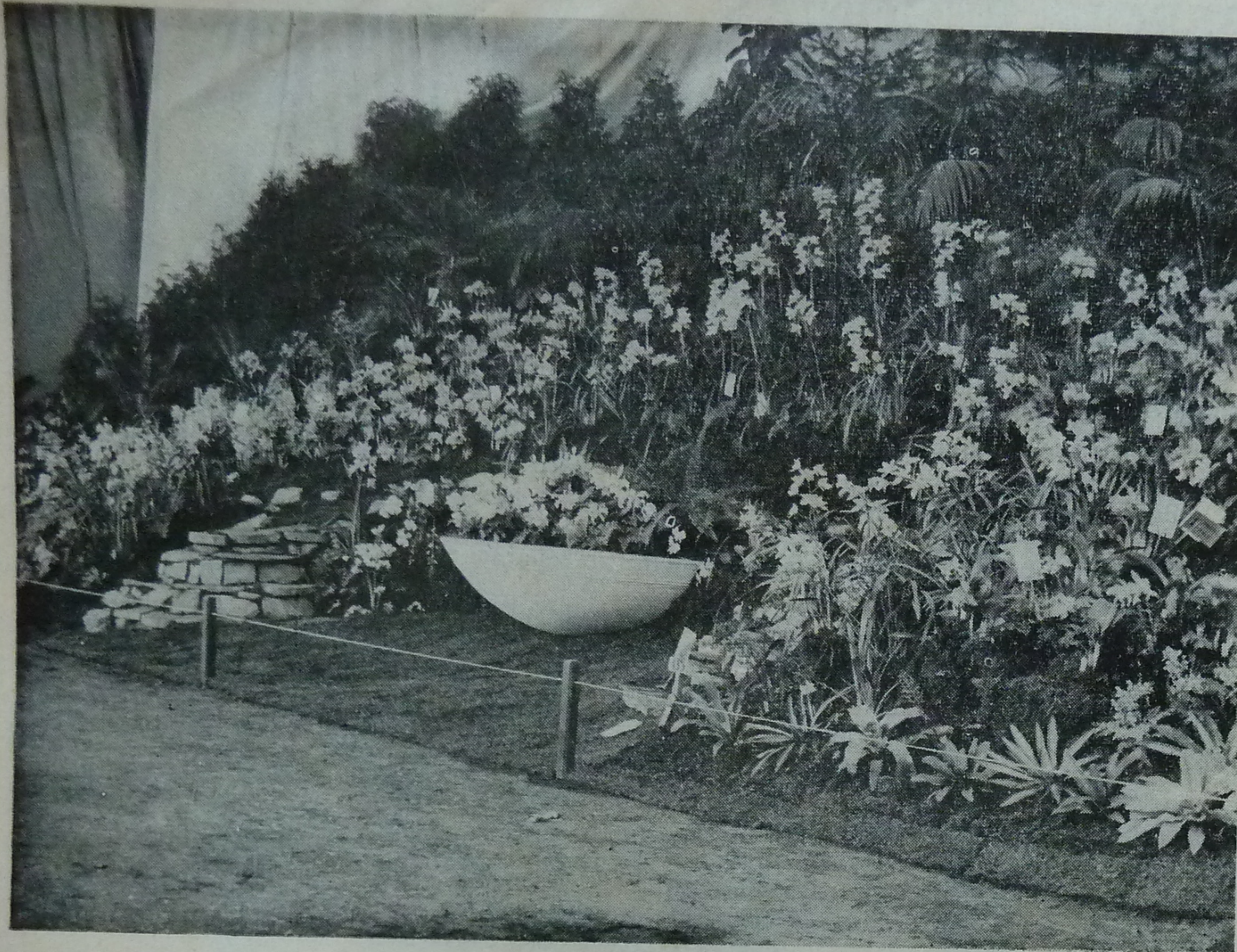
at 10/- each.

B. GOOD WELL GROWN PLANTS to flower on next growth, 4 to 5 bulbs, in 3" pots, 30 different varieties, colouring white to dark mauve

at 20/- each.

C. STRONG FLOWERING SIZED PLANTS- many already flowered, capable of giving an abundance of bloom, 6 to 7 bulbs, in 4" to 5" pots. best hybrids,

at 40/- each.



A view of our famous orchid group which won the « Grand Prix de S.M. le Roi », the « Grand Challenge des Florales Internationales Gantoises » and numerous other first prizes.

CYMDIDIUM HYBRIDS.

In 3 useful Sizes — A. Seedling plants, best varieties, 2 bulbs, 1 growth in 2 1/2 pots at 12/6 each.

B. Good plants, to flower after next growth, 3 to 4 bulbs with growth, in 4" to 5" pots, excellent hybrids " 30/- "

C. Strong flowering sized plants, 4 to 5 bulbs, in 5" to 6" pots, will give good spikes, best varieties, " 50/- "

Cypripediums, Miltonias, and Orchid species — we have a fine selection, prices on request.

TERMS OF SALE. — Subject to being unsold on receipt of order. — Prices quoted are ex our Bruges Nurseries. — Payment nett at thirty days. — Packing charged at cost prices.

N.B. We much regret we cannot quote Free London, Tariff paid, as formerly, but we will be only too pleased to see to all transit operations, such as transport, customs formalities and clearance, and put the goods on rail London.



Moving century-old baytree to winter quarters.



One of our Baytrees exhibited at the Floralties Valenciennes (France) April 1911

Just think what these Baytrees can stand! The group was awarded
First prize

Bird's eye view of some of our Greenhouses at St André-lez-Bruges

